

Tech Guide

LSA / H2650i SUPERCHARGER LID & INTERCOOLER RANGE

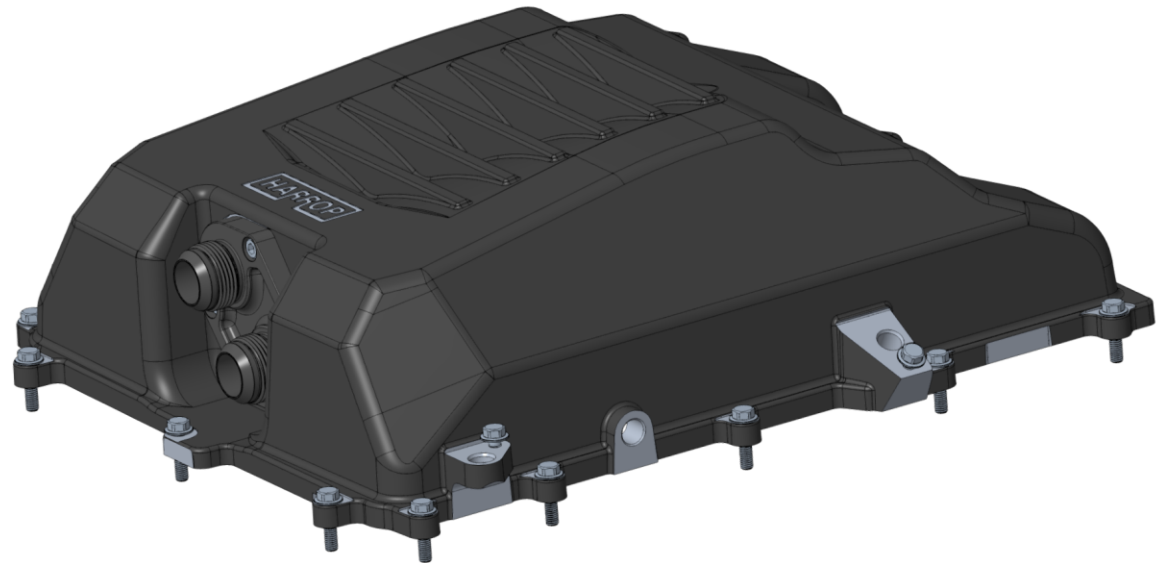


Harrop Engineering develops and manufactures premium supercharger kits for customers globally. Since 1955 Harrop have successfully designed and manufactured components for OEM's, Motorsport Teams, Car Builders and Enthusiasts. Harrop Engineering Australia and USA is certified to ISO 9001 standards with superior quality, performance and vehicle integration the foundation of Harrop Performance Products.



Standard Features – Harrop LSA / H2650i Large Lid

- Fully designed and manufactured in Australia from cast aluminium by Harrop Engineering.
- Developed to suit GM VF Holden/HSV & Chevy SS platforms fitted with the new Harrop 2650i LSA Supercharger or factory LSA 1900 Supercharger. Factors such as hood, scuttle, firewall and engine variations on other vehicle platforms may restrict fitment of this lid and must be validated prior to installation. Refer dimensions (Page 6-7)
- Designed to provide larger plenum volume and better airflow distribution to the rear cylinders over the standard LSA lid
- Incorporates all factory mounting positions for IAT and MAP sensors
- Various intercooler water in/out configurations (AN16 shown)
- Includes the release of an upgraded intercooler core with the lid design supporting fitment of either upgraded or standard OEM LSA intercooler core
- The standard engine cover will fit with trimming



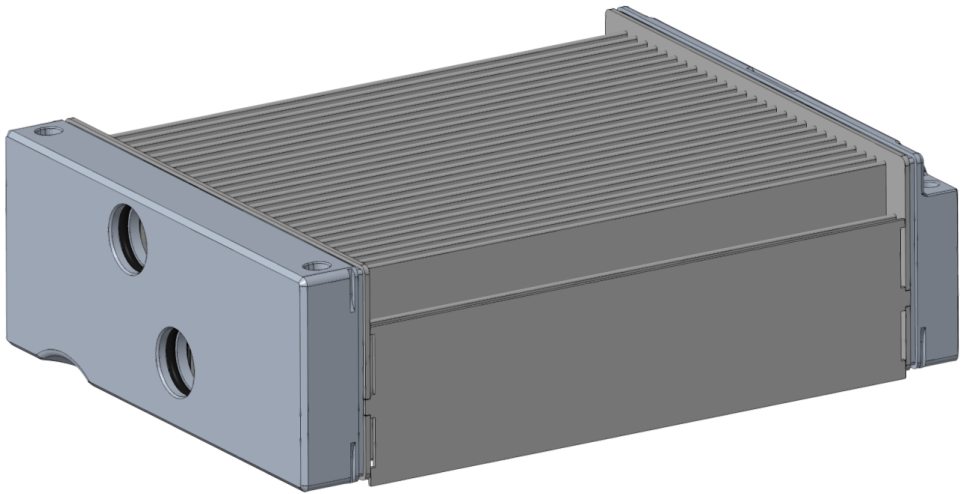


Harrop Intercooler Core upgrade (LSA / H2650i Large Lid)

Features

- More than twice the size of the OEM HSV & ZL1 intercooler core for improved cooling efficiency and thermal performance
- Billet end tanks to withstand higher boost pressure

INTERCOOLER CORE	LENGTH (mm/ <i>inch</i>)	WIDTH (mm/ <i>inch</i>)	THICKNESS (mm/ <i>inch</i>)	CUBIC (mm/ <i>inch</i>)	HSV & ZL1 LSA EXTRA CORE VOLUME
HSV & ZL1 LSA	197mm(<i>7.76"</i>)	174mm(<i>6.85"</i>)	56mm(<i>2.22"</i>)	1919cc(<i>118ci</i>)	-
CTSV LSA	197mm(<i>7.76"</i>)	174mm(<i>6.85"</i>)	69mm(<i>2.70"</i>)	2365cc(<i>143ci</i>)	1.2x (<i>21%</i>)
Harrop LSA	284mm(<i>11.18"</i>)	208mm(<i>8.19"</i>)	73mm(<i>2.87"</i>)	4312cc(<i>263ci</i>)	2.2x (<i>122%</i>)



Tech Guide

LSA / H2650i SUPERCHARGER LID & INTERCOOLER RANGE



LSA OEM Intercooler

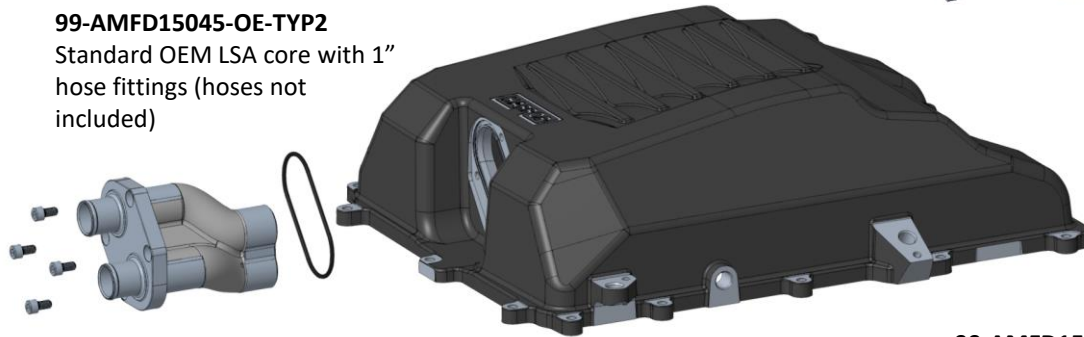
- Large lid – 99-AMFG15045
- LSA OEM Intercooler

Harrop Lid Configurations

(Not supplied with IAT sensor, MAP sensors, lid gasket GM part No. 12613457 and core seal GM part no. 12612467)

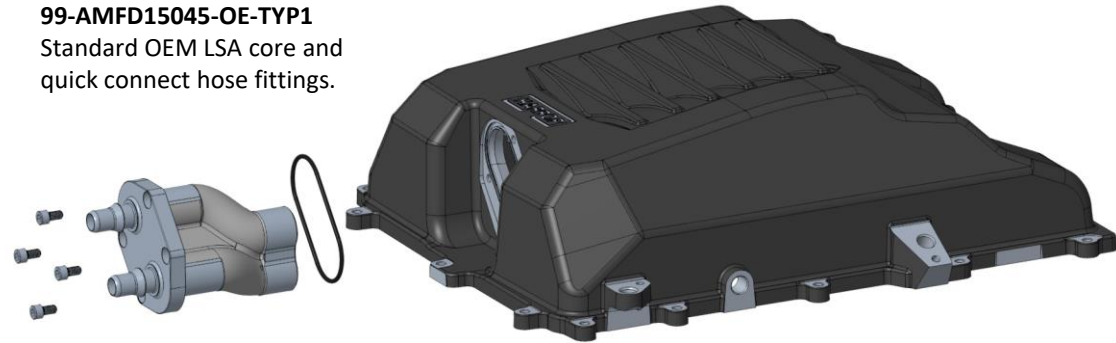
99-AMFD15045-OE-TYP2

Standard OEM LSA core with 1" hose fittings (hoses not included)



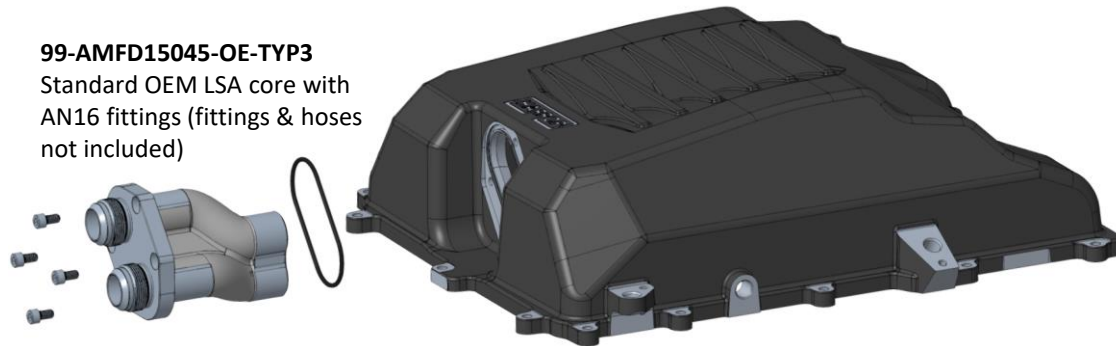
99-AMFD15045-OE-TYP1

Standard OEM LSA core and quick connect hose fittings.



99-AMFD15045-OE-TYP3

Standard OEM LSA core with AN16 fittings (fittings & hoses not included)



Tech Guide

LSA / H2650i SUPERCHARGER LID & INTERCOOLER RANGE

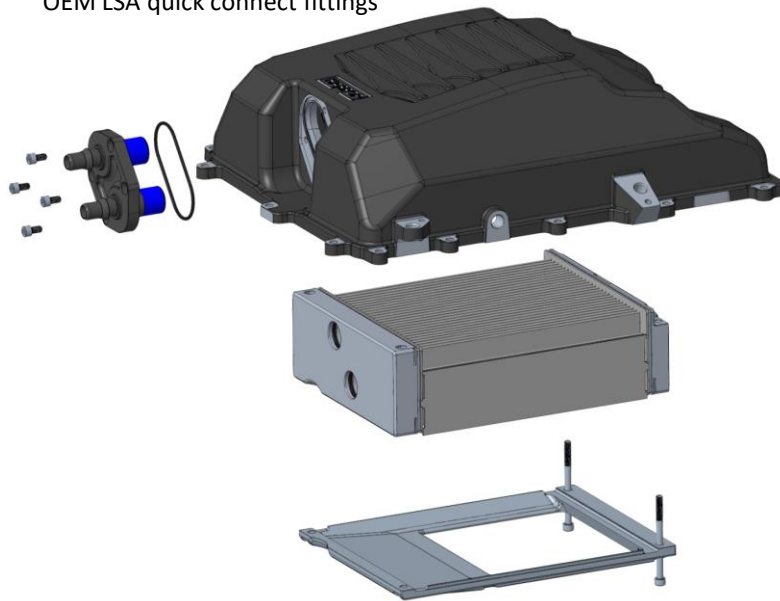


Harrop Intercooler

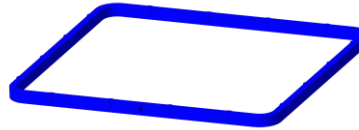
- Large lid
- Harrop Intercooler
- Requires intercooler seal: **98-SEL16680**

99-AMFD15045-HE-TYP1

OEM LSA quick connect fittings

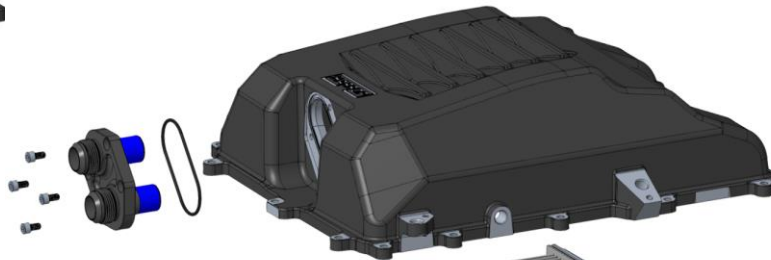
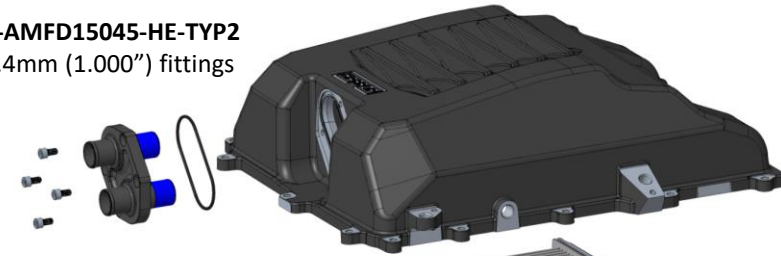


Intercooler seal: **98-SEL16680**



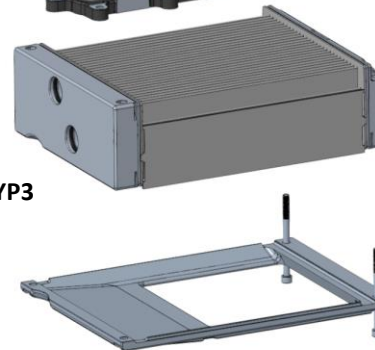
99-AMFD15045-HE-TYP2

25.4mm (1.000") fittings



99-AMFD15045-HE-TYP3

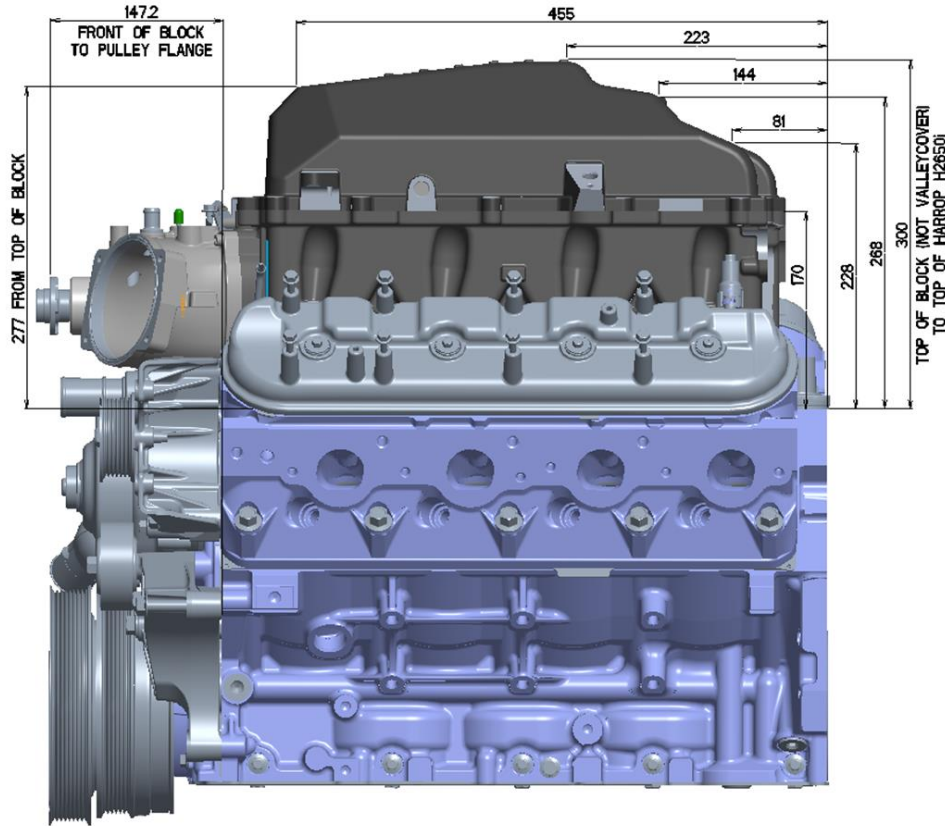
AN16 fittings



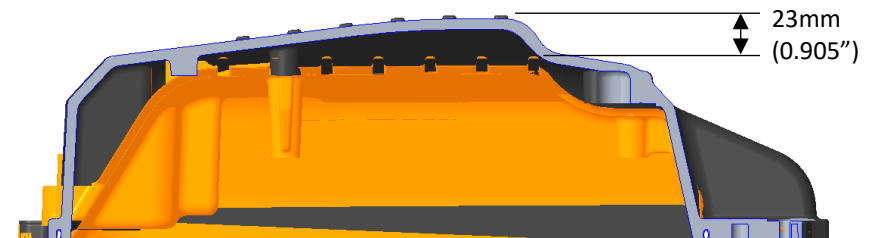
- **NOTE**
Front bolts are not installed in intercooler mounting plate
These holes are used for assembly fixturing only

Dimensions & Specifications

- Large lid - 99-AMFD15045

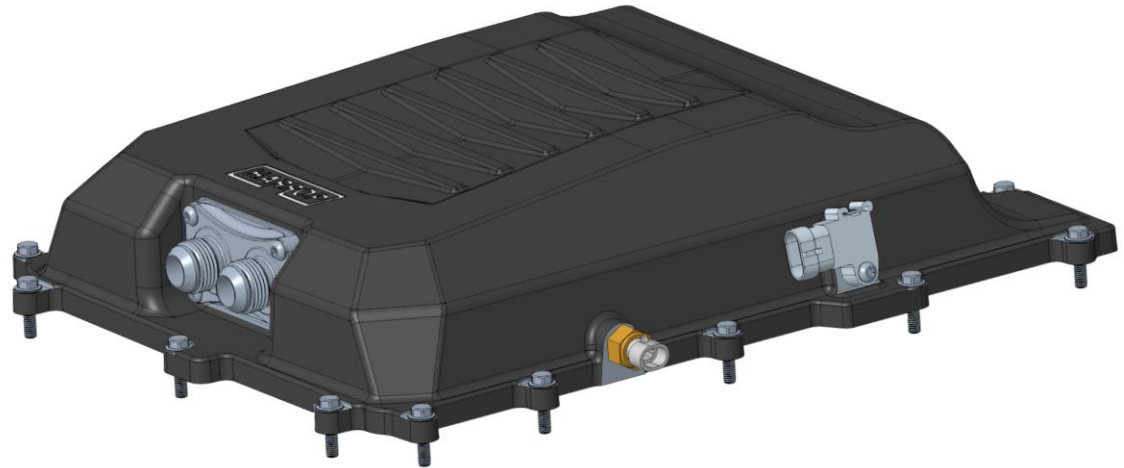


Lid height comparison – OEM LSA vs. Harrop tall lid



Standard Features – Harrop LSA / H2650i Low Lid

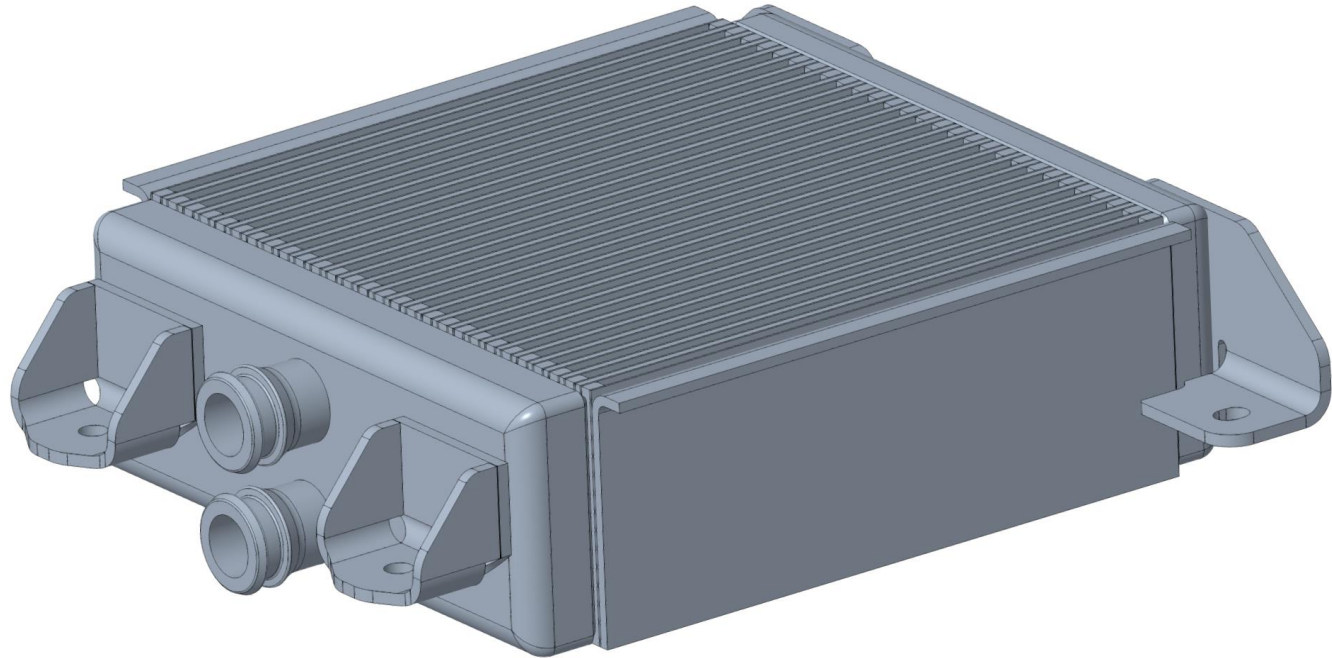
- Fully designed and manufactured in Australia from Billet aluminium by Harrop Engineering.
- Developed to suit Harrop 2650i LSA Supercharger or factory LSA 1900 Supercharger. Factors such as hood, scuttle, firewall and engine variations may restrict fitment of this lid and must be validated prior to installation. Refer dimensions (Page 10-11)
- Designed to provide lower installation height than OEM LSA
- Incorporates all factory mounting positions for IAT and MAP sensors
- Various intercooler water in/out configurations (AN12 shown)
- Includes the release of an upgraded intercooler core with the lid design supporting fitment of either upgraded or standard OEM LSA intercooler core.
- The standard engine cover will fit with trimming



Harrop Intercooler Core upgrade (LSA / H2650i Low lid)

Features

- Direct OEM replacement
- High density, High efficiency core design
- Billet end tanks to withstand higher boost pressure
- 63mm thick core vs 56.5mm OEM core
- Uses OEM LSA intercooler seal / O-rings



Tech Guide

LSA / H2650i SUPERCHARGER LID & INTERCOOLER RANGE



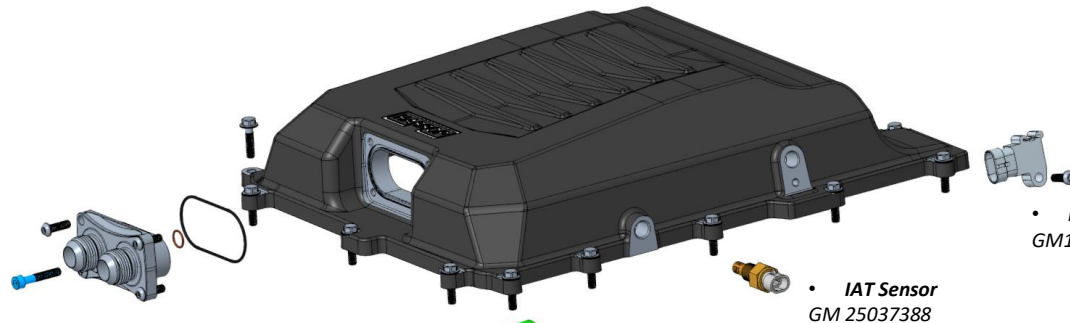
- Low Lid – PN 99-AMFD17108
- Harrop LSA Intercooler

Harrop Lid Configurations

(Not supplied - lid gasket GM part No. 12613457 and core seal GM part no. 12612467)

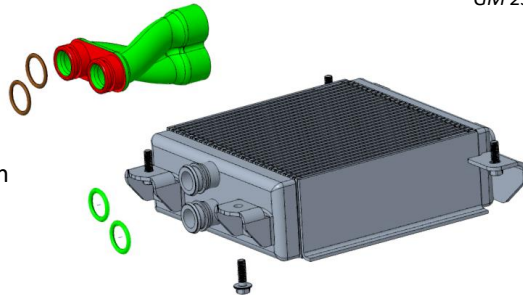
99-AMFD17108-TYP1

Standard OEM LSA core and quick connect hose fittings



99-AMFD17108-TYP3

Standard OEM LSA core with AN12 fittings

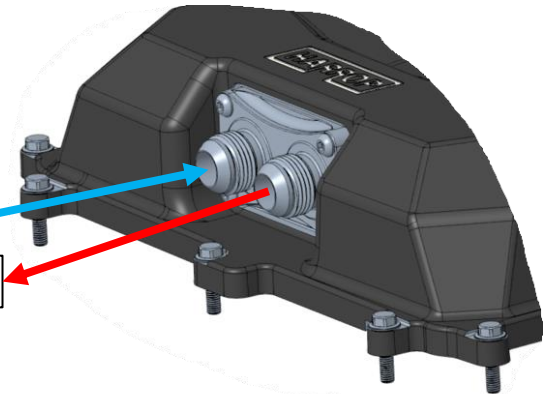


- MAP Sensor 2.7Bar
GM12592525 – 55567257

- IAT Sensor
GM 25037388

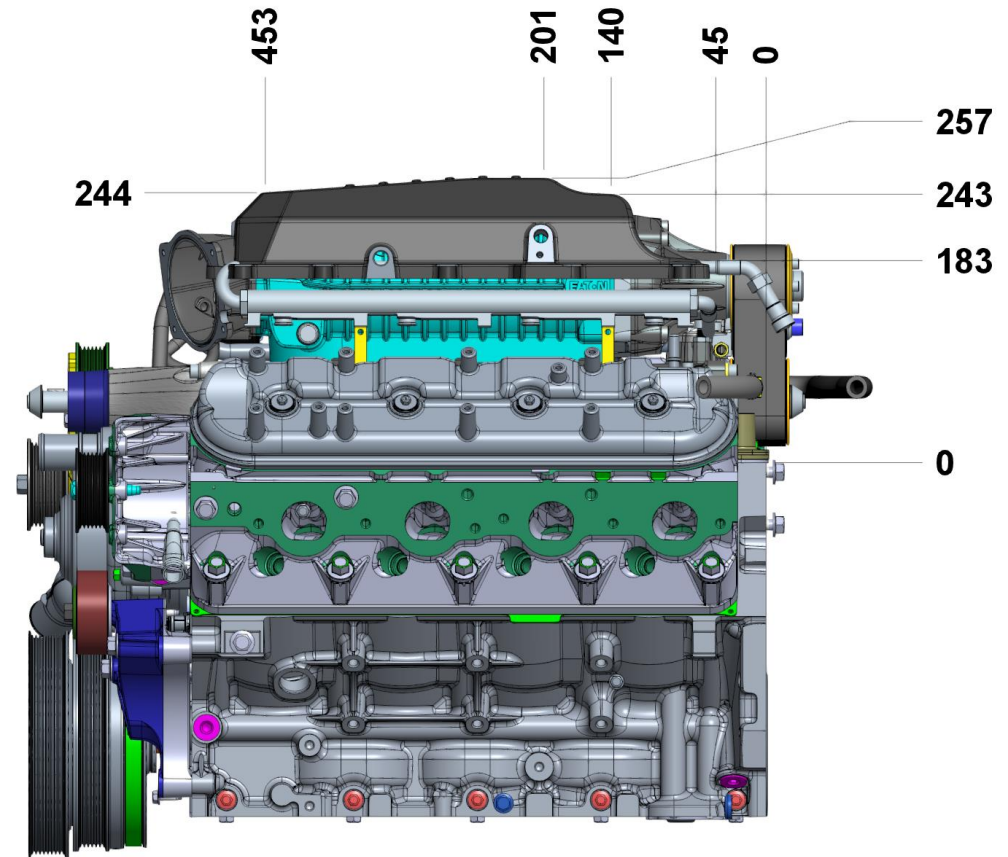
INTERCOOLER IN

INTERCOOLER OUT



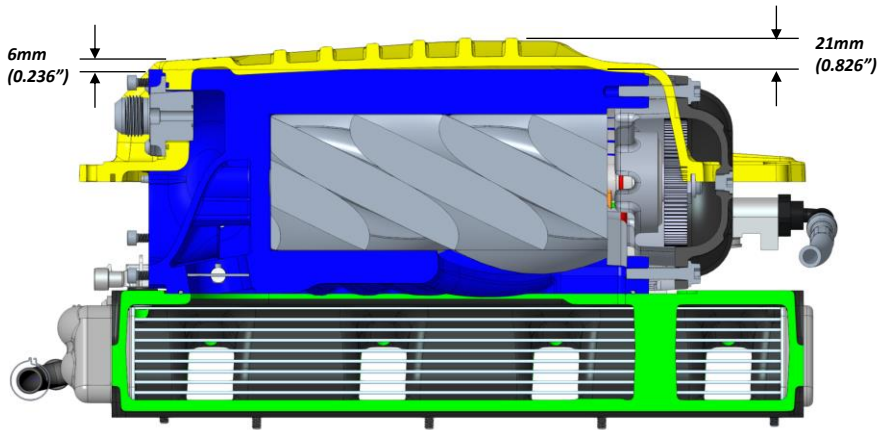
Dimensions (LSA engine, H2650i / OEM LSA Supercharger)

- Low lid - 99-AMFD10108
- Dimensions shown from valley plate block face and rear block face

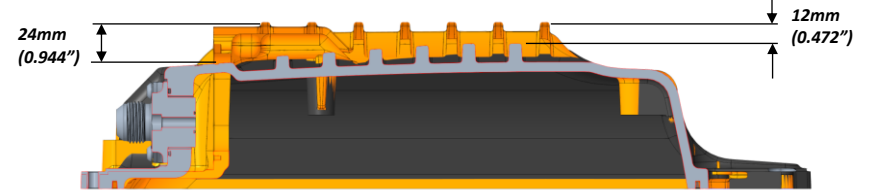


Height comparison

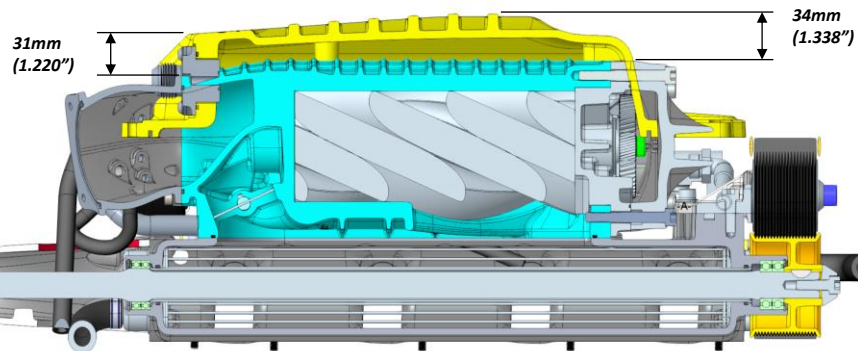
Harrop LSA Low lid (Yellow) vs. FDFI2650 (Blue)



Harrop LSA Low lid vs. OEM LSA



Harrop LSA Low lid vs. LS HTV2300 (Cyan)



Harrop LSA Tall Lid vs. Harrop LSA Low lid

