

Harrop LSA Supercharger Lid - Features

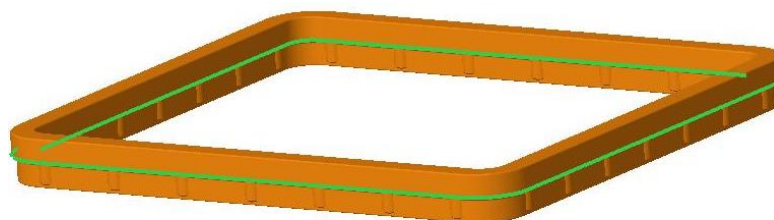
17 Dec 2021

- Fully designed and manufactured in Australia from cast aluminium by Harrop Engineering.
- Developed to suit GM VF Holden/HSV & Chevy SS platforms fitted with the new Harrop 2650i LSA Supercharger or factory LSA 1900 Supercharger. Factors such as hood, scuttle, firewall and engine variations on other vehicle platforms may restrict fitment of this lid and must be validated prior to installation. Please refer to lid dimensions below.
- Designed to provide larger plenum volume and better airflow distribution to the rear cylinders over the standard LSA upper lid.
- Incorporates all factory mounting positions for IAT and MAP sensors and includes variable intercooler water inlets – see configurations below.
- Includes the release of an upgraded intercooler core with the lid design supporting fitment of either upgraded or standard OEM LSA intercooler core.
- The standard engine cover will fit with some trimming as per image below



Harrop Intercooler Core upgrade - Features

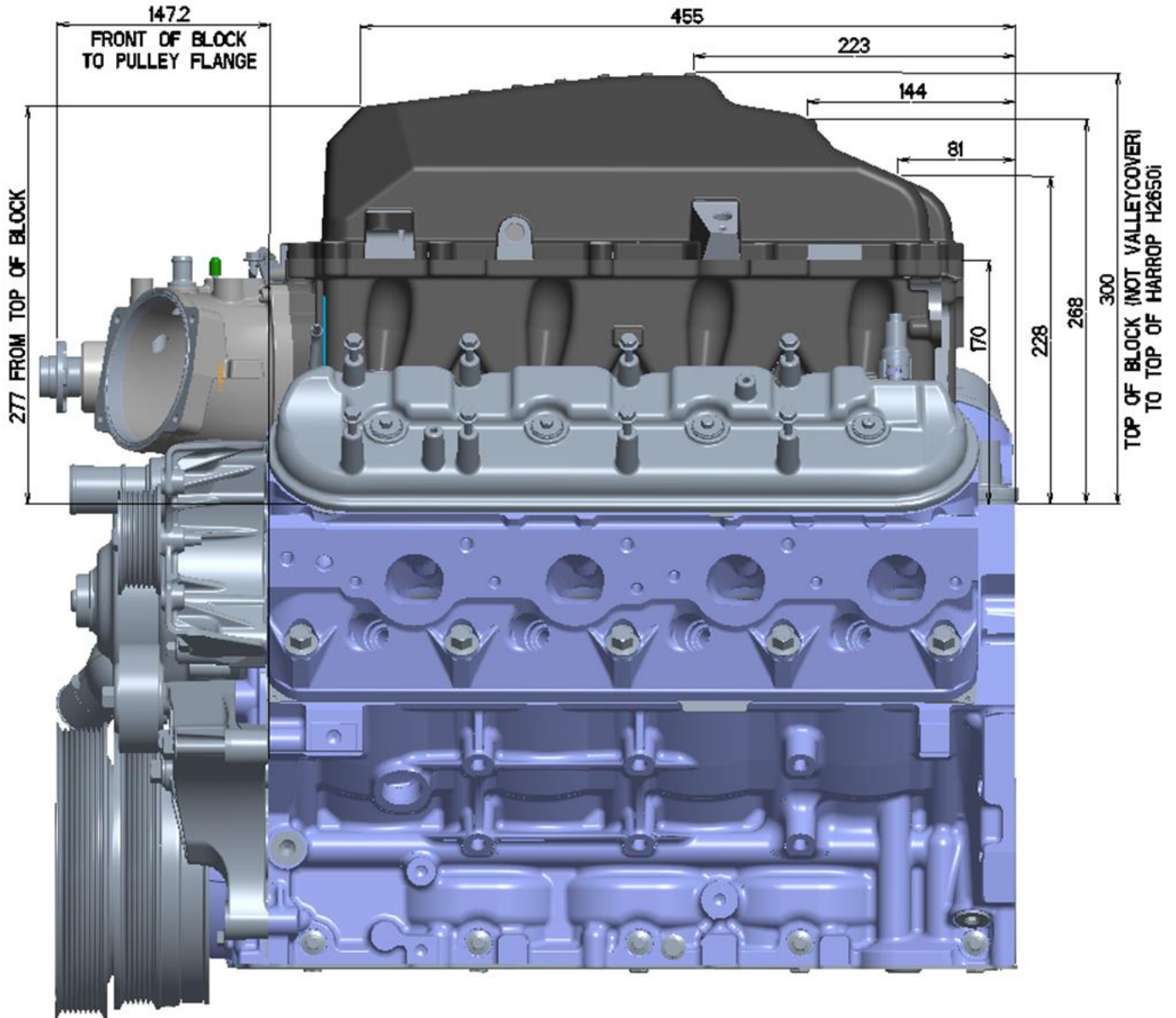
- The Harrop intercooler core is more than twice the size of the OEM HSV & ZL1 intercooler core for improved cooling efficiency and thermal performance.
- Featuring high density fin, close pitched tubes with billet end tanks to withstand higher boost pressures compared to the factory pressed alloy end tanks which are prone to collapsing under load.
- Fitment of the Harrop intercooler will require the factory silicone seal to be trimmed along the green line (No trimming required for OEM LSA core). Intercooler core seal must then be placed upside down into groove once trimmed to a height of 7.5mm.
(Seal not supplied as part of assembly, GM part no. 12612467)



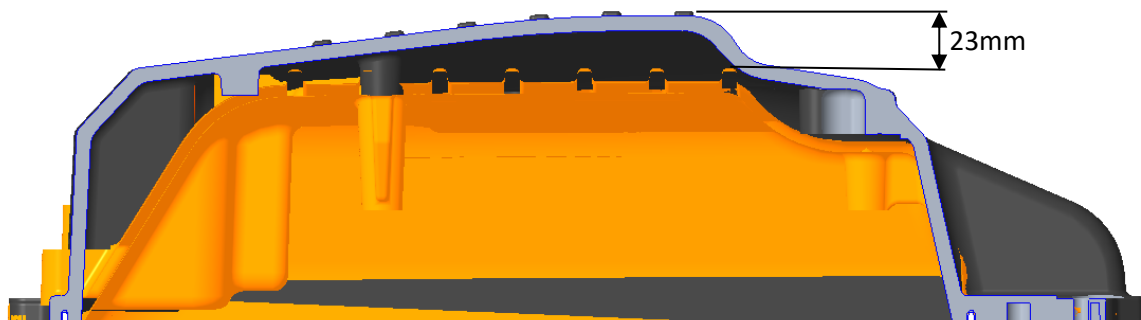
Dimensions & Specifications

17 Dec 2021

- Harrop Supercharger lid



- Lid height comparison LSA v Harrop



- Harrop Intercooler core

INTERCOOLER CORE	LENGTH (mm/inch)	WIDTH (mm/inch)	THICKNESS (mm/inch)	CUBIC (mm/inch)	HSV & ZL1 LSA EXTRA CORE VOLUME
HSV & ZL1 LSA	197mm(7.76")	174mm(6.85")	56mm(2.22")	1919cc(118ci)	-
CTSV LSA	197mm(7.76")	174mm(6.85")	69mm(2.70")	2365cc(143ci)	1.2x (21%)
Harrop LSA	284mm(11.18")	208mm(8.19")	73mm(2.87")	4312cc(263ci)	2.2x (122%)

Harrop Lid Configurations

(Not supplied with IAT sensor, MAP sensors, lid gasket GM part No. 12613457 and core seal GM part no. 12612467)

99-AMFD15045-OE-TYP1

Standard OEM LSA core and quick connect hose fittings.



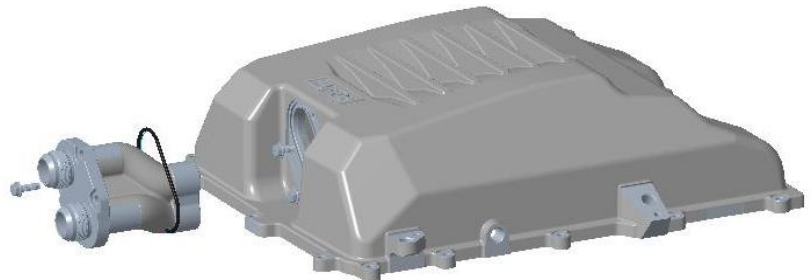
99-AMFD15045-OE-TYP2

Standard OEM LSA core with 1" hose fittings (hoses not included).



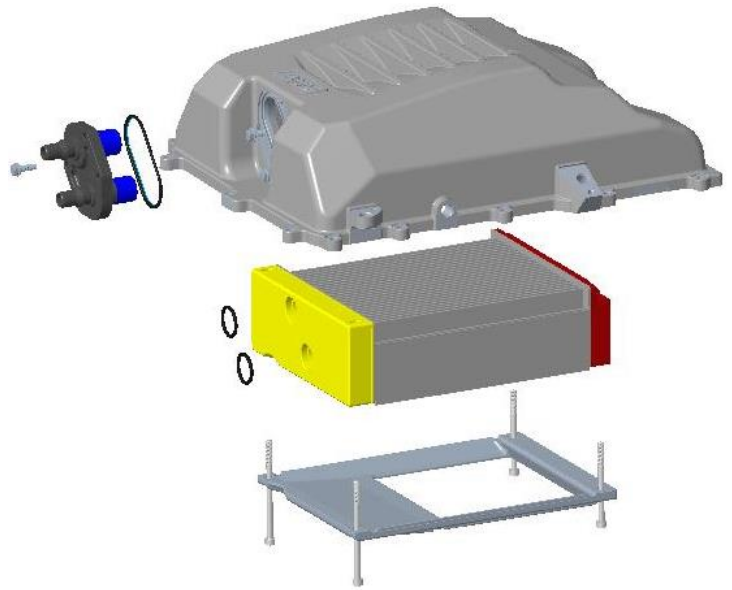
99-AMFD15045-OE-TYP3

Standard OEM LSA core with AN16 / DASH16 fittings (fittings & hoses not included).



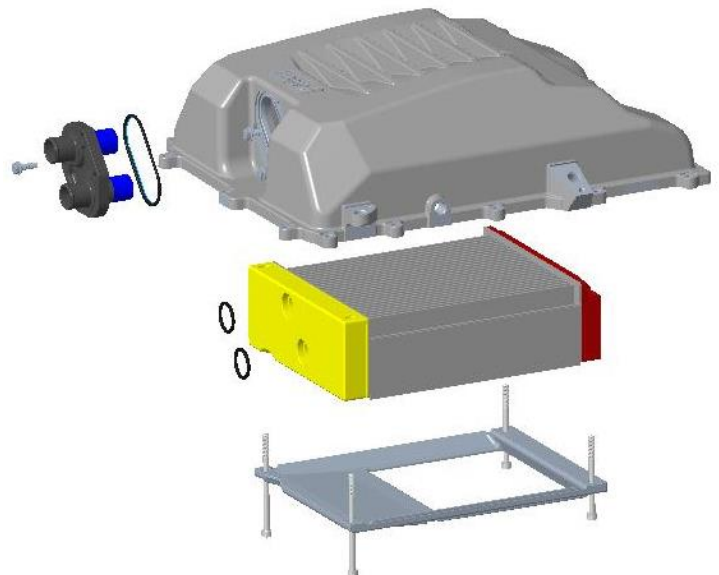
99-AMFD15045-HE-TYP1

Harrop intercooler core with standard OEM quick connect hose fittings.



99-AMFD15045-HE-TYP2

Harrop intercooler core with 1" hose fittings (hoses not included).



99-AMFD15045-HE-TYP3

Harrop intercooler core with AN16 / DASH16 fittings (fittings & hoses not included).

